



# Summit Homes, LLC

## Quality Features

### Attention to Details

Summit Homes, LLC  
 517 Anthony Lane  
 Lincoln, NE 68520  
 402-430-5338 Craig  
 402-430-5339 Jerry



**Open Sunday 12:30-2 & Wed 4-6 @ 5405 Folkways Pl.**

**3156 King Ridge Blvd.**

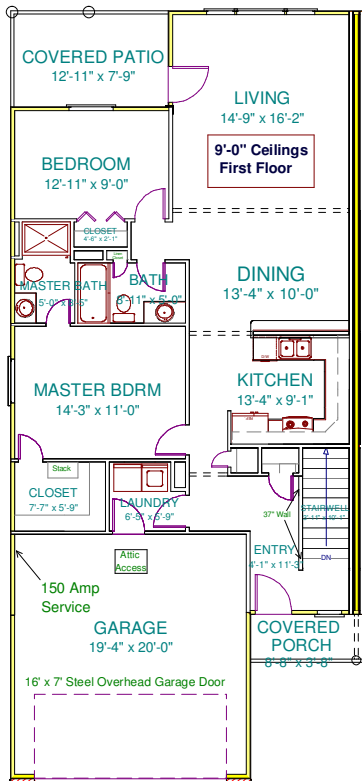


*Simulated*

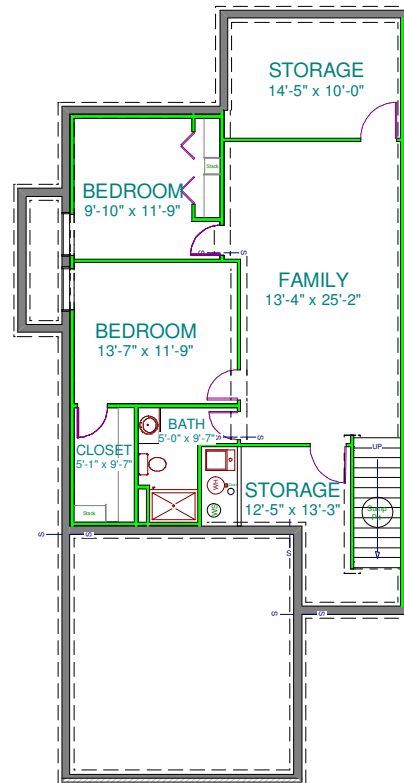


The Excalibur offers exceptional quality with the added ease of ownership, and all at an affordable price. Our ranch townhomes has 9' ceilings through the first floor, and a popular open kitchen that pours into the dinette and living room. Ample sized rooms, a first floor laundry and a full basement make this a must see! Complete with all the Summit Homes features you've come to expect, with custom oak woodwork in selected area, and 3-panel doors, cedar stained oak cabinets, ceramic tile, wood floors, and frieze carpet.

### First Floor



### Basement



This is Copywritten material, and is the sole property of Summit Homes, LLC. Anyone who copies or builds his plan without written permission from Summit Homes, LLC., will be prosecuted to the fullest extent on the law.

# Listing Information

Contact us at:  
craig@summithomeslincoln.com  
jerry@summithomeslincoln.com

Property Type: Ranch Style Duplex with Full Basement

Price: \$170,987

Condition: New Construction

Square Feet: 1214

Lot Size: 35 X 76 plus Commons

Bedrooms: 2 + 2

Bathrooms: 2 Full, 1- 3/4 Bath

Garage: 2

Stories: 1

## Interior Features

Fireplace: None

Basement Finish: Yes

Cooling: Central Air

Appliances: Wh. Glass Cooktop Range, Micro/hood, DW

Heating: Heat Pump/ Gas Furn.

Flooring: Wood, Ceramic Tile & Carpet

Garage Door Opener: Yes with Keyless Entry

Addition Interior Features: 9' Ceilings throughout first floor, and finished basement with legal egress windows for 2 bedrooms included.

## Exterior Features

Roof: Comp- Tamko Heritage 30

Exterior: Limestone, Vinyl Siding

Topography: Flat

Basement: Full With 2 egress windows

Lawn Sprinkler: Yes

Waterproofing: Interior & Exterior Drintile W/Sump Pump

Addition Exterior Features: Covered porch, Covered Patio, Handsome Craftsman Style

Exterior with Vinyl Shake Siding Accents & Architectural Shingles

## School Information

Elementary: Campbell

Middle: Dawes

High: North Star

## Financial Considerations

Association Fee: \$75.00 Month includes Lawn Care, Snow Removal & Garbage Service

Tax Property ID:

17-06-104-020-000

Tax Amount:

\$228.22

Tax Year:

2010



**Summit Homes, LLC**  
**Quality Features**



An Energy Star Partner

**Attention to Details**

**3156 King Ridge Blvd.**

For More Information Contact

Craig Chesnut 402-430-5338

Jerry Buettner 402-430-5339